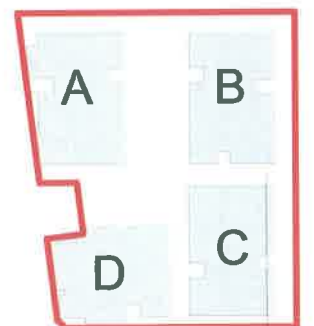


1 Hannah Street Facade Section D2  
1:100

## Indicative Finishes

	PV1.Charcoal Brick Pavers		FB 2. Face Brick (Dark Grey)		PC 1 Powdercoat (Dark)
	PV2.Large Format Brown Concrete Pavers		RB 1 Rendered Brick (Light)		PC 2 Powdercoat (Light)
	FB 1. Face Brick (Brown)		RB 2 Rendered Brick (Dark)		ST 1 External Stone Tile

## KEY PLAN



D2



© dKO Architecture Pty Ltd  
Except as allowed under copyright act, no part of this drawing may be reproduced or otherwise dealt with without written permission of dKO Architecture.

Architect  
dKO architecture (NSW) Pty Ltd  
C19/38-48 Macarthur St  
Ultimo, NSW 2007, AUS  
T +61 2 8346 4500  
www.dko.com.au / info@dko.com.au  
ABN: 61413787636

Client Details  
Sony Brothers Ltd

Project  
Module Shopping Centre  
Beecroft Redevelopment  
cnr Hannah St / Beecroft Rd  
Beecroft  
NSW, 2119

Project Number  
10733

Drawing  
Facade Section Detail 2  
Scale 1:100@A3  
Date 21.11.14  
Drawn JF Checked RM  
10733/DA/10002